

Swimming Pools

# Mesh and Solid Safety Covers



*latham*



## Latham Mesh and Solid Safety Covers

Warm summer days bring fun times in your pool, but all seasons should be worry-free. With a Latham safety cover, you can enjoy your pool and rest assured that it is safe and secure — even when you're not in it.

Latham mesh and solid safety covers protect children and pets while securing and preserving your pool. Designed and manufactured with safety as the priority, safety covers create a protective barrier that keeps everything out of your pool, including the elements and unwanted fauna. A safety cover will preserve your pool for years and allow you to start your swim season sooner, when you can open your pool with minimal cleaning and maintenance.



### **Protection**

A Latham safety cover is an impregnable barrier that secures your pool from children and pets. Each cover is engineered to deliver protection through a combination of superior-quality cover materials and commercial-grade hardware. Latham safety covers are resistant to damage from extreme sun, snow, rain and wind.

### **Convenience**

Installation, removal and storage of Latham mesh and solid safety covers is fast and simple. After your initial dealer installation, you can easily remove your cover and store it in the provided Latham storage bag. Reinstalling the cover is swift and straightforward with the installation tool provided.

### **Savings**

Latham mesh and solid safety covers help you save on pool maintenance expenses. Using one with proper winterization methods will significantly reduce pool-opening costs for cleaning, chemicals and maintenance.

### **Design**

Give your backyard an upgrade with a Latham safety cover. While many covers are as unsightly as they are ineffective, Latham covers are both highly functional and very beautiful. Easy to keep clear of debris, they complement the style of your backyard all year long.

# Superior Hardware Built to Last

## Heavy-Duty Springs

Low-profile, heavy-duty single springs are standard on every 9000MX, 7000MS and HyPerLite cover. D-rings with integrated knurling ensure your cover lies flat, and fits tight with no strap slippage, for maximum protection. All springs include vinyl sleeves enhanced with a pin lock so they stay put and provide added protection.

## Brass Deck Anchors

Ultrasonic-hardened brass anchors are industrial-grade and corrosion-resistant. They provide incredible strength and durability, and will retract into your deck surface to disappear when not in use.

## Stainless-Steel Flush Wall Anchor

The stainless-steel flush wall anchor, optional for raised wall applications, is pushed in and tightened after the cover is removed. This provides a clean look as the anchor head remains flush with the raised wall.

## Reduced Deck Mount™

The Reduced Deck Mount (RDM) system allows you to place an anchor as close as 2 inches to the perimeter edge of the cover for installations with as little as 18 inches of deck space. The RDM system has been enhanced with a snap hook for even easier installation on the cover.

## Heavy-Duty Straps

Latham uses a dual strapping system sewn together on both sides of the cover with a triple-stitched seam. To provide additional strength for high-stress areas, bar and box tack reinforcement is used on all perimeter straps.

## Interlocking Seams

A safety cover is only as strong as its seams, potentially its weakest points. Latham uses interlocked and double overlapped seams to dramatically improve weight transfer from the cover material to the seams and webbing.

## Protection for the Pads and Webbing

Heavy-duty vinyl nosing pads protect the cover against wear from coping and steps, while a chafing strip sewn to the bottom of the cover protects the cover webbing from coping abrasion wear — and won't mark the coping, like other strips.

## UV-Resistant Thread

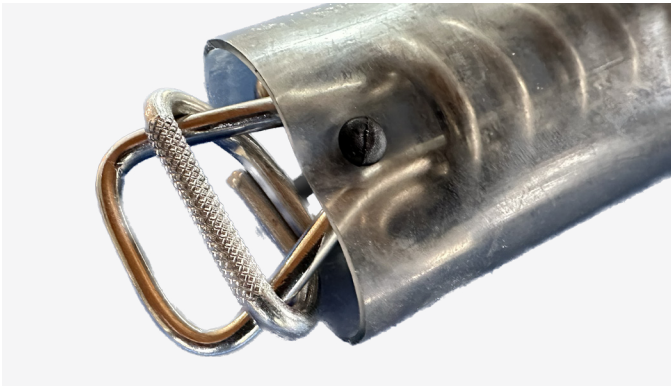
Our extra-durable thread resists sun damage and pool chemicals.

## Invis-A-Drain™

Standard on all Latham solid safety covers, the Invis-A-Drain system handles rain and melting snow, keeping maintenance to a minimum. Quarter-inch drain holes are located every 6 inches in the reinforced vinyl above a mesh drain filter. This feature — exclusive to Latham — facilitates optimal placement of the drain regardless of a cover's design, while also being more aesthetically pleasing than traditional drain panels.

## Kem-Kap

Available on all Latham mesh and solid safety covers, Kem-Kap is an exclusive feature that provides convenient service access.



Heavy-Duty Spring



Heavy-Duty Straps



Brass Deck Anchors



Reduced Deck Mount

## Mesh and Solid Safety Cover Materials

### 9000MX™ Gray/Black

The 9000MX is engineered for the highest level of protection.\* Built with reinforced mesh and box-stitched thread at critical webbing joints, it is equipped with heavy-duty suspension. This cover has been designed to be stronger and more reliable than any foreseeable situation might require of it, and it will protect your pool against the most demanding conditions.

25-year warranty with 5-year full coverage and 20-year prorated coverage against manufacturer defects.

### 7000MS™

A lightweight, ultra-fine weave mesh blocks 99 percent of sunlight and filters fine dirt particles down to 40 microns, while also offering drainage for rain and melting snow.\* This mesh fabric provides excellent all-weather performance in a low-maintenance, easy-to-operate cover.

20-year warranty with 5-year full coverage and 15-year prorated coverage against manufacturer defects.

### 5000M™

This durable micro-weave fabric cover combines 91 percent sun block and high-level protection with value. The mesh has the highest abrasion resistance and tear strength in its class, and is able to filter debris and dirt.

15-year warranty with 3-year full coverage and 12-year prorated coverage against manufacturer defects.

### 1000HS

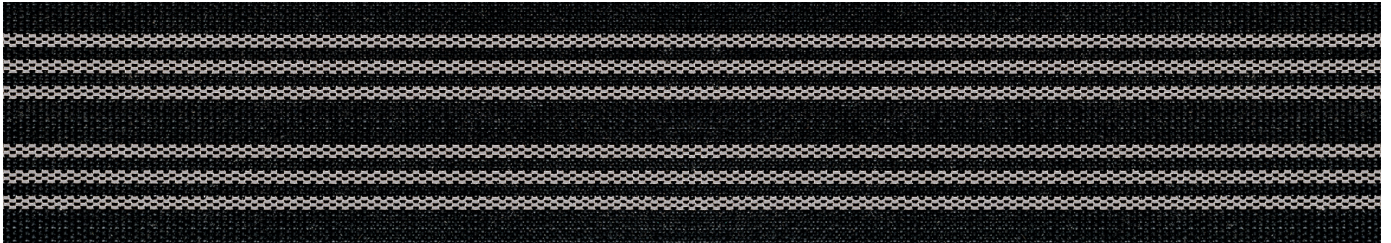
This solid cover acts as a complete barrier to sunlight, dirt, debris and water. Heavy-duty fabric construction provides protection from the elements and prevents algae growth, keeping your pool clean in the off-season. Latham's exclusive Invis-A-Drain system handles rain and melting snow, keeping maintenance to a minimum.

15-year warranty with 3-year full coverage and 12-year prorated coverage against manufacturer defects.

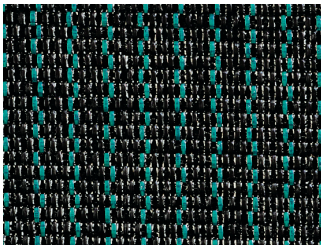
### 500P™

A great value, and also easy to install and remove, this lightweight, 7-ounce solid safety cover acts as a complete barrier against sunlight and debris. The fabric is UV- and mildew-resistant, and incorporates the exclusive Invis-A-Drain system to handle rain and melting snow.

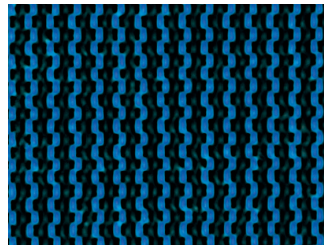
12-year warranty with 2-year full coverage and 10-year prorated coverage against manufacturer defects.



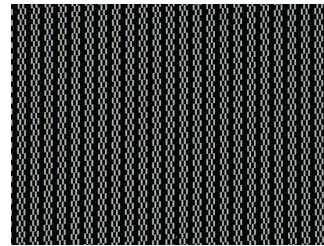
9000MX Exclusive Design \*New Gray/Black Color



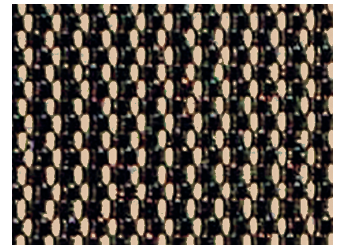
7000MS Green



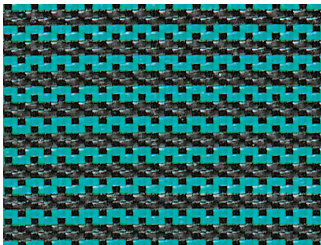
7000MS Blue



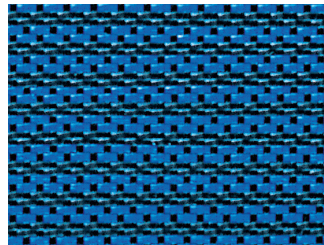
7000MS Gray



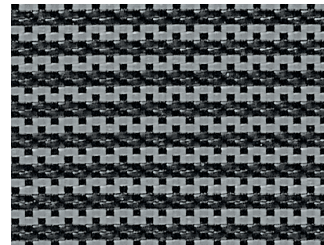
7000MS Tan



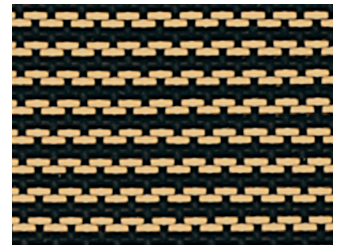
5000M Green



5000M Blue



5000M Gray



5000M Tan



1000HS Green



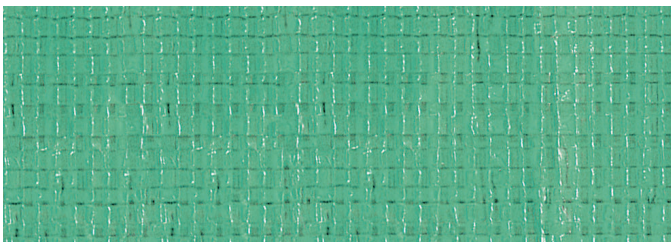
1000HS Blue



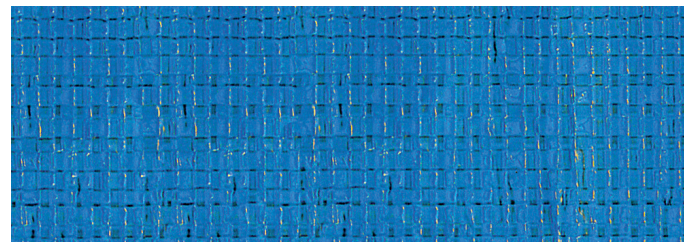
1000HS Gray



1000HS Tan



500P Green

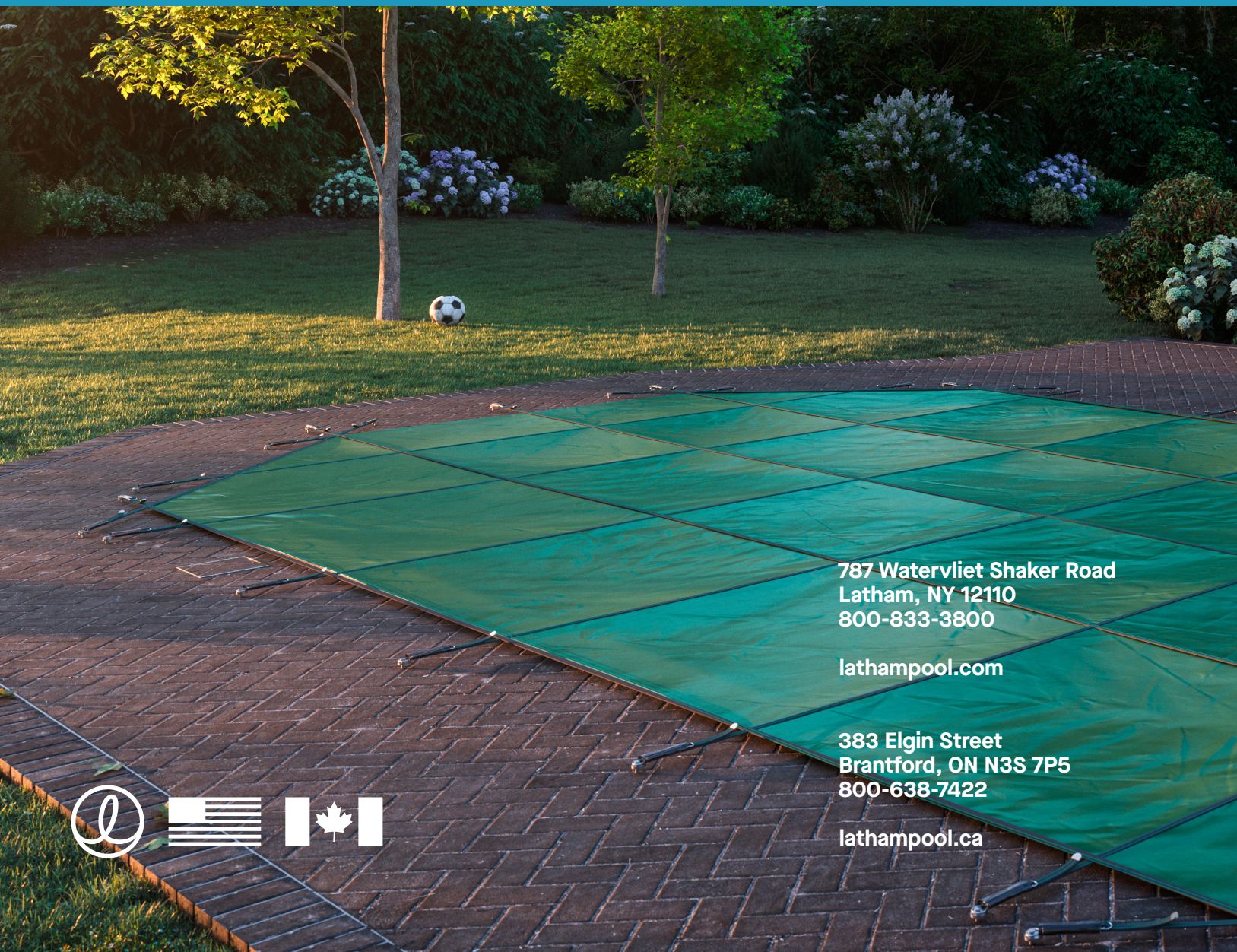


500P Blue

ASTM SAFETY STANDARDS: Latham materials and hardware locking systems are rigorously tested to meet or exceed ASTM safety standards. To comply with ASTM safety standards, solid vinyl covers must be equipped with an automatic pump or have built-in drainage to remove standing water.

Your particular pool design may have special features that do not meet ASTM standards. Please consult your pool professional when purchasing a cover. ASTM standard F1346.91.

All cover samples are for illustration purposes only. The manufacturer reserves the right to change cover selections without notice. Covers depicted are representative of the actual material; however, variations in color and shading may occur.



**787 Watervliet Shaker Road  
Latham, NY 12110  
800-833-3800**

**[lathampool.com](http://lathampool.com)**

**383 Elgin Street  
Brantford, ON N3S 7P5  
800-638-7422**

**[lathampool.ca](http://lathampool.ca)**

